



A detached four bedroom family home in Kingswood

exclusive to

SAUNDERS

richardsaunders.co.uk

Forest Drive Kingswood KT20

Banstead Village 4.1 miles

London by rail 45 minutes

M25 (Junction 8) 3.7 miles

All times and distances are approximate

A stunning four bedroom family house on a popular private road in Kingswood. The property offers exceptionally generous living with ample storage throughout, enclosed rear garden with both decking and patio areas along with the added bonus of a double garage.



Available July

Four Bedrooms

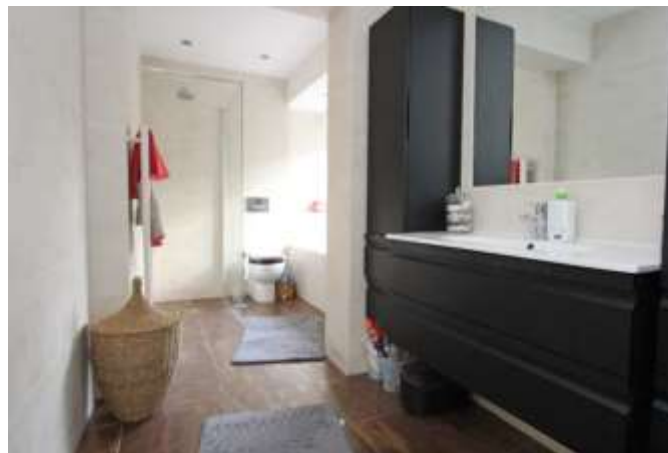
Unfurnished

Double Garage

Short Walk To Kingswood Village

Large Orangery

Price £3,400pcm







discover more at richardsaunders.co.uk



IMPORTANT NOTICE TO PURCHASERS: We endeavour to make our sales particulars accurate and reliable, however, they do not constitute or form part of an offer or any contract and none is to be relied upon as statements of representation or fact. The services, systems and appliances listed in this specification have not been tested by us and no guarantees as to their operating ability or efficiency are given. All measurements have been taken as guide to prospective buyers only, and are not precise. If you require clarification or further information on any points, please contact us, especially if you are travelling some distance to view.

Viewing
Please call us to arrange
a viewing appointment

1 Waterhouse Lane
Kingswood
01737 360000

2 High Street
Banstead
01737 363333

Residential Lettings
All Areas
01737 370700

SAUNDERS
richardsaunders.co.uk